

„HYDRO-PUSH“ – LOAD SECURITY SYSTEMS



Certified load fastening device

„Hydro-Push“ is the easiest way for a safe fixation of your valuable freight.

Emergency fail safety system

Patented by Langendorf – more safety for your trailer and staff

FOR THE SAFE GLASS TRANSPORT

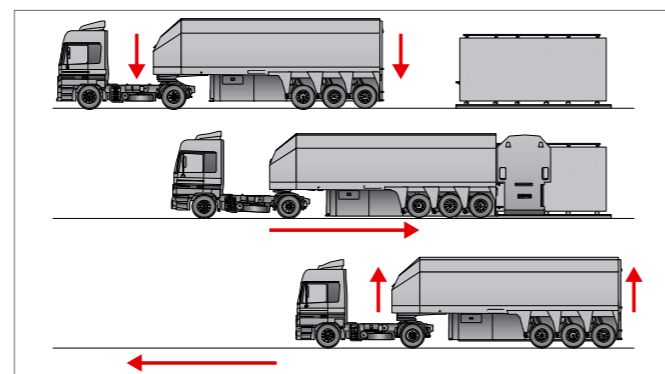
The „Hydro-Push“ load security systems in different executions ensure a safe fixation of different kinds of glass: Floatglass, DLF, PLF, thin glass or coated glass on A-racks as well as on L-racks.

YOUR ADVANTAGE

We have more than 125 years of experience in producing commercial vehicles and have been manufacturing Inloaders for more than 40 years. Our experience is your advantage to find the best solution for you.

EMERGENCY FAIL SAFETY SYSTEM

The mechanical fail-safe system effectively prevents damage if the Floatliner loses air during the ride. Thanks to the mechanical lock, you can safely continue with a loaded Floatliner to the next workshop. The simple operation of the safety system is patented by Langendorf and increases comfort for your staff.



LD_Floatliner_07/2018_GB Pictures include optional equipment. Changes are possible because of technical progress.



FLOATLINER

THE SAFE AND EASY WAY FOR
RATIONAL GLASS TRANSPORT



LANGENDORF GMBH · Bahnhofstraße 115 · 45731 Waltrop · GERMANY
☎ +49 2309 / 938-0 · 📠 +49 2309 / 938-190 · ✉ info@langendorf.de

WIELTON
GROUP



www.langendorf.de

FLOATLINER – FOR SAFE AND EASY GLASS TRANSPORT



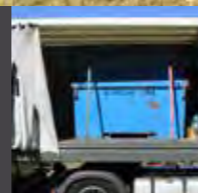
Consistently light-weight

First and foremost trimmed to weight - the absence of the „lift-arm“ ensures an excellent curb weight



More place for load

The optional platform offers an additional length of 3.600 mm.



Special equipment against condensation

Of course our Floatliner are available with an internal heating system.



Flexibility at first

Thanks to the „lifting-arm“, the Floatliner fits to every standard-truck - a great advantage for mixed fleets with changing trucks.

FLOATLINER AS A STANDARD VERSION

The glass Inloaders are fully lowerable in standard version. Special requirements with regard to the equipment as well as national regulations can be considered.

FLOATLINER WITH ADDITIONAL NECK PLATFORM

Neck for transporting small glass racks, broken glass buckets etc., can be delivered in various executions, e.g. with curtain-type tarpaulin as well as with Edscha sliding roof for loading and unloading from the top.

SPECIAL EQUIPMENT AGAINST CONDENSATION

Together with the worldwide leading partners in glass-production we have been continuously developing the Floatliner for 40 years. That increases the safety for the freight as well as for the driver. More safety, more economic and more ecological transport.

40 YEARS EXPERIENCE

The own construction of our axle benefits from decades of experience in various fields of application – worldwide.



Weather -proof control unit

Cotton-tarpaulin in the loading space to avoid condensation

Forced ventilation of the loading space

Back- door made from aluminium high protection - less weight